

58351-小米理发器2 国际版

Xiaomi Hair Clipper 2 MJGHHC2LF

Product Configuration

1. Double-coated high-hardness blades
2. 19-length adjustment
3. Powerful motor
4. Dual-speed control
5. Intelligent anti-hair jamming system
6. Digital Display
7. Coded and cordless use
8. IPX7 full-body waterproof IPX7



Dual-coated high-hardness blade

The fixed blade is made using powder metallurgy technology, with vacuum-plated DLC and graphite dual coatings to enhance wear resistance.

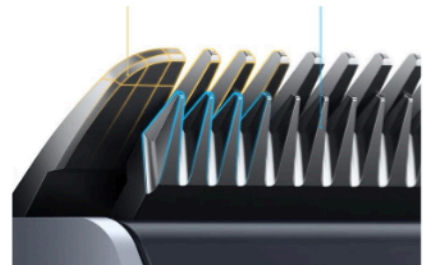
This effectively reduces friction-induced blade heating and discomfort on the scalp.

Powder metallurgy fixed blade

The R-shaped rounded tip prevents skin injury.

Ceramic Moving Blade

high hardness, wear resistance, sharpness, and long-lasting durability.



Charging range

It takes only 2.5 hours to fully charge, providing up to 180 minutes of runtime.

With each haircut lasting 30 minutes, a single charge can support up to 6 uses, meeting the haircutting needs of the entire family.

IPX7 whole device washable

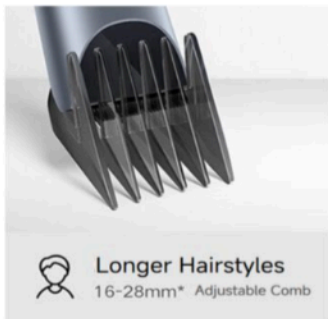
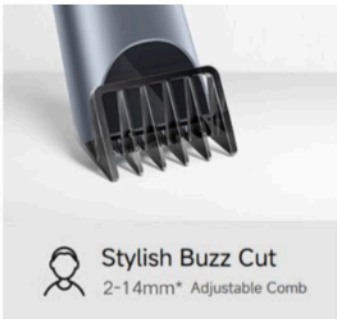
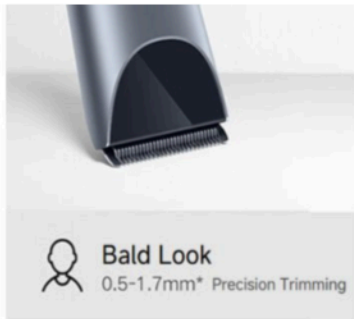
The entire body is washable, meeting IPX7 waterproof standards, allowing for direct rinsing with water. The body is easy and quick to clean, maintaining hygiene at all times.



Flexible length selection of hair trimming

Dual-speed control: Gentle low-speed setting for fine hair, powerful high-speed setting for coarse hair.

19-length adjustment: The blade offers 5 precision trimming settings, complemented by 14 fixed-length guide combs for creating a clean and tailored hairstyle. Each comb setting adjusts by 2mm, providing flexible control for a more refined haircut result.



5 Levels Precision Trim:
0.5mm,
0.8mm,
1.1mm,
1.4mm,
1.7mm.

7 Levels Adjustable:
2mm,
4mm,
6mm,
8mm,
10mm,
12mm,
14mm.

7 Levels Adjustable:
16mm,
18mm,
20mm,
22mm,
24mm,
26mm,
28mm.

Specs :	
	Xiaomi Hair Clipper 2
Model	MJGHHHC2LF
Brand	Xiaomi
Product Type	Hair Clipper
Color	Gray
Item Dimensions	47 × 48 × 182 mm
Package Dimensions	195 × 198 × 50 mm
Rated Voltage/Power	3.7 V = 3 W
Charging Voltage/Current	5 V = 1 A
Charging Time	2.5 hours
Waterproof	IPX7
Standard Package	Main unit, 2 Adjustable Comb(2-14 mm, 16-28mm), Charging Cable, Cleaning Brush, Sponge, Barber Cape, User Manual