



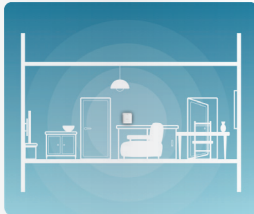
## Big House? No Big Deal.

If you've got a large home, thick walls, or simply transfer a lot of data, the COVR-1100's got your back. Your backhaul to be exact. With optional Ethernet backhaul connectivity, you can optimize the connection between COVR units no matter what's between them and rest assured that whatever you're doing online will be fast, stable and smooth.

## Simple. Yet Flexible

The COVR Dual Band Whole Home Mesh Wi-Fi Router works straight out of the box, so you just need to plug it in and get started. The best part? It's flexible enough to cover most housing types. Add extra COVR-1100 units for an extra 1500 square feet of coverage each so, from 1-storey apartments to 4-storey houses, and basements to back decks, COVR's got you covered.

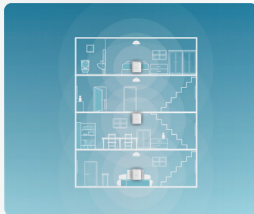
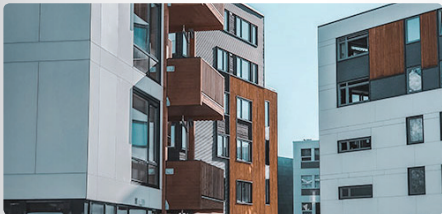
### Large Family Homes



### 2-storey houses



### 4-storey houses



## Works With the Google Assistant and Alexa

Turn on/off your guest Wi-Fi, ask for your guest Wi-Fi credentials, reboot your router or update your firmware. Do it ALL hands-free using voice commands.

Just speak the words of command to your Google Assistant or Alexa, and the router bends your smart home Wi-Fi to your will (without you having to lift a finger). Perfect for when you've got your hands full entertaining guests or just want to wow them with your smart Wi-Fi.



## Technical Specifications

<b>Ethernet Ports</b>	1 x LAN/1 x WAN Gigabit
<b>Wireless Speed</b>	AC1200 (300 + 867 Mbps)
<b>Antennas</b>	2x2 + 2x2 Internal
<b>Mesh Standard</b>	Wi-Fi CERTIFIED EasyMesh™
<b>Coverage</b>	185 sqm/2000 sq. ft
<b>Ethernet Backhaul</b>	Yes
<b>MU-MIMO</b>	Yes
<b>Beamforming</b>	Yes
<b>Voice Control Support</b>	The Google Assistant, Alexa
<b>Wireless Encryption</b>	WPA3™

## WPA3 — The Future of Wireless Encryption

One of the biggest concerns with IoT devices and Wi-Fi networks is privacy. WPA3 (Wi-Fi Protected Access 3) is the most advanced Wi-Fi Alliance® certified security standard available and begins a new era of wireless encryption, ensuring greater privacy throughout users' devices and networks. COVR-1100 features the latest Wi-Fi CERTIFIED WPA3™ wireless encryption standard.



**The Future of Wireless Encryption**  
WPA3 will replace the previous WPA2 on Wi-Fi devices



**Stronger Encryption Algorithm**  
WPA3 is more resistant to hacking and cracking



**Enhanced Protection from Brute Force Attacks**  
Stronger protection for users against password guessing attempts



**Individualized Data Encryption**  
Creates stronger and more unique encryption keys for each device



**Forward Secrecy**  
Cannot use a cracked password to decrypt previously-intercepted traffic



**Futureproof and Compatible**  
Give your network the future of wireless encryption today

WPA3, Wi-Fi Protected Setup, Wi-Fi CERTIFIED EasyMesh™ and the Wi-Fi CERTIFIED logo are trademarks of Wi-Fi Alliance®.



COVR-1100

## AC1200 Dual Band Whole Home Mesh Wi-Fi Router

Cover your Whole Home in Seamless Mesh Wi-Fi



Wi-Fi CERTIFIED EasyMesh™



# COVR AC1200 Dual Band Whole Home Mesh Wi-Fi Router

COVR-1100

Introducing COVR-1100, the mesh Wi-Fi router that blankets your home with high speed AC1200 Dual-Band Wi-Fi. The COVR-1100 works as a standalone router or add-on for existing COVR-1102 and COVR-1103 systems.

- High speed AC1200 Dual-Band Wi-Fi.
- Industry Standard Wi-Fi CERTIFIED EasyMesh™ for more flexibility
- Covers up to 2,000 sq. ft (185 sqm) with high-speed Wi-Fi
- Works with the Google Assistant and Alexa
- Add additional COVR-1100 units to expand your mesh Wi-Fi network as you wish
- Profile-based parental controls for setting boundaries online
- Super simple set-up with the D-Link Wi-Fi app



Wi-Fi CERTIFIED  
EasyMesh™



Parental Controls



Simple Setup



Smart Steering



MU-MIMO  
Technology



Works with your  
existing router or  
gateway



Expandable  
Network



Smart Roaming\*

\* Smart Roaming requires a minimum of two COVR points which have been configured as a mesh network.

## High Performance

With high-speed AC1200 Dual Band Wi-Fi, and 11ac Wave 2 with MU-MIMO, COVR-1100 is fast enough to support multiple devices undertaking everyday data-intensive tasks like HD streaming and video chats simultaneously. Perfect, if you're just starting out in whole home networking.



AC1200



Dual Band Wi-Fi



MU-MIMO

## One Seamless Network

With COVR, there's just one wireless network name (SSID) for your entire home, no matter where you are. You'll never have to remember user names and passwords for different networks in your home ever again.



## More Coverage

The discreet COVR-1100 unit covers up to 185 square meters (2,000 square feet) – enough seamless Wi-Fi coverage to eliminate pesky Wi-Fi dead zones in houses of different sizes and designs.



185 sqm (2,000 sq. ft)

## Advanced Software Features

The COVR-1100 unit is compact and discreet by design, but don't let its small size mislead you. It's packed with advanced software features for better connectivity and increased compatibility. What's more – it's futureproofed and ready to go!

- Quick VPN lets you easily connect to a remote network with ease
- Quality of Service (QoS) prioritizes network traffic to minimize the impact of busy bandwidth
- Triple Play VLAN allows ISPs to provide multiple services through one router
- Bridge Mode allows COVR to be used with your existing ISP's router
- Dual-Stack Lite and IPv6 6rd for ease of use on IPv4 and IPv6 equipment

## Simple Setup

There are two easy ways to configure your COVR Dual Band Whole Home Mesh Wi-Fi System – Use the free D-Link Wi-Fi app for iOS and Android devices, or use the intuitive web-based setup wizard on your computer. Please see the following pages for further details on how to set up your COVR Dual Band Whole Home Mesh Wi-Fi System using these two methods.

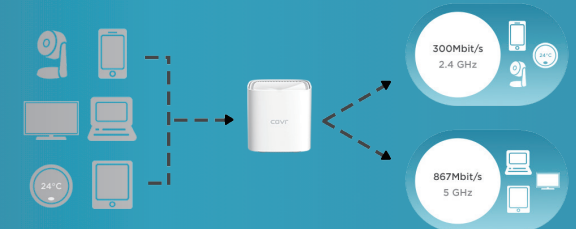
## Industry-Certified Mesh Standard

As one of the world's first Wi-Fi CERTIFIED EasyMesh™ systems, COVR-1103 boasts industry-standard Mesh Networking technology. You can enjoy the flexibility and reliability of the networking industry's leading Mesh Wi-Fi standard now, while safe in the knowledge that updates to the standard will be compatible with your system in the future.



## Reduce Buffering and Lag

Smart Steering technology steers you away from buffering and lag by automatically directing your device to the optimum wireless band, depending on your current network traffic. No more frustrating dropouts, lags or interruptions in your wireless connections.



## Free Yourself with Smart Roaming

Don't let endless disconnecting and reconnecting to different networks cripple your Wi-Fi experience. Smart Roaming keeps you constantly connected to the strongest signal even as you move from room to room.



With Roaming



Without Roaming