

These cables feature all the benefits of professional assembly with manufacture moulding to help them survive the rigors of a desktop environment, LINK offers fully Booted Category 5e (CAT 5E) Patch Cords that will give you years of dependable use these patch cords are nearly impossible to damage! It's a smart and sound investment. All of the colored patch cords are T568B pinning with 100% tested.

SPECIFICATION

Standard : ANSI/TIA-568.2-D Category 5e, ISO/IEC 11801:2017 Class D and EN50173-1
 Application : 10/100/100 BASE-T, 2.5G BASE-T, IEEE 802.3i/u/ab/bz, PoE/PoE+, 4/16 Token Ring, 52/155/622Mbps and 1.2Gbps ATM, ISDN, VoIP and other
 Cable : Stranded wire flexible UTP Category 5e Cable
 Flame rating : CM or LSZH
 Color : White, Red, Green, Blue, Yellow
 Connector : Category 5e RJ45 modular Plugs with 50 micro-inches Gold Plating over Nickel Plated and Phosphor Bronze
 Wire Size : 24AWG
 Slim Boot : Transparent boot from manufacturer are designed to protect Plugs and Cables
 Q.C : 100% factory assembly and testing
 Approvals : UL Listed E197771 and Intertek Channels Test
 Certified : Lead-free & RoHS Compliant

Part No.	Description	Length (m.)
US-5003LZ-X	CAT 5E RJ45 to RJ45 PATCH CORD, LSZH	1
US-5006LZ-X	CAT 5E RJ45 to RJ45 PATCH CORD, LSZH	2
US-5010LZ-X	CAT 5E RJ45 to RJ45 PATCH CORD, LSZH	3
US-5015LZ-X	CAT 5E RJ45 to RJ45 PATCH CORD, LSZH	5
US-5020LZ-X	CAT 5E RJ45 to RJ45 PATCH CORD, LSZH	10
US-5025LZ-X	CAT 5E RJ45 to RJ45 PATCH CORD, LSZH	15
US-5030LZ-X	CAT 5E RJ45 to RJ45 PATCH CORD, LSZH	20

X Color = 1 (White), 2 (Red), 3 (Green), 4 (Blue), 5 (Yellow)

SPECIFICATION

Standard : ANSI/TIA-568.2-D Category 5e, ISO/IEC 11801:2017 Class D and EN50173-1
 Application : 10/100/100 BASE-T, 2.5G BASE-T, IEEE 802.3i/u/ab/bz, PoE/PoE+, 4/16 Token Ring, 52/155/622Mbps and 1.2Gbps ATM, ISDN, VoIP and other
 Cable : Stranded wire flexible F/UTP Category 5e Cable
 Color : Black
 Connector : Category 5e RJ45 modular Plugs with 50 micro-inches Gold Plating over Nickel Plated and Phosphor Bronze
 Wire Size : 26AWG
 Slim Boot : Transparent boot from manufacturer are designed to protect Plugs and Cables
 Q.C : 100% factory assembly and testing
 Certified : Lead-free & RoHS Compliant

Part No.	Description	Length (m.)
US-5003SLZ-X	Shield CAT 5E RJ45 to RJ45 PATCH CORD, LSZH	1
US-5006SLZ-X	Shield CAT 5E RJ45 to RJ45 PATCH CORD, LSZH	2
US-5010SLZ-X	Shield CAT 5E RJ45 to RJ45 PATCH CORD, LSZH	3

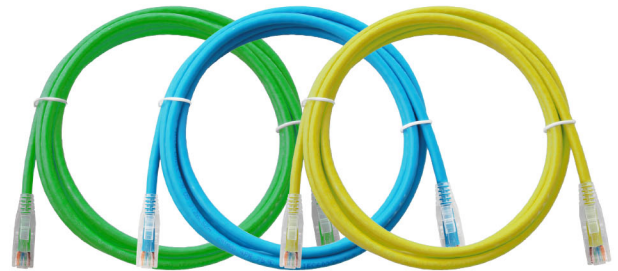
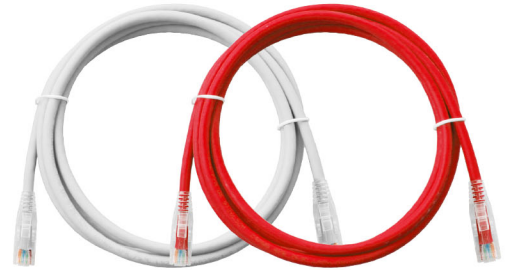
X Color = 6 (Black)

SPECIFICATION

PERFORMANCE : ANSI/TIA-568.2-D Category 5e Channel , ISO/IEC 11801:2017 Class D Channel
 Application : IEEE802.3, 1000Base-T, 10/100Base-TX
 Cable : Stranded wire flexible UTP Category 5e Cable
 Color : Pink
 Connector : Category 5e RJ45 modular Plugs with 50 micro-inches Gold Plating over Nickel Plated and Phosphor Bronze
 Wire Size : 30AWG
 Slim Boot : Molding from manufacturer are designed to protect Plugs and Cables
 Q.C : 100% factory assembly and testing
 Certified : Lead-free & RoHS Compliant

Part No.	Description	Length (m.)
US-5041-X	FLAT CAT 5E RJ45 to RJ45 PATCH CORD	1
US-5042-X	FLAT CAT 5E RJ45 to RJ45 PATCH CORD	2
US-5043-X	FLAT CAT 5E RJ45 to RJ45 PATCH CORD	3
US-5045-X	FLAT CAT 5E RJ45 to RJ45 PATCH CORD	5
US-5050-X	FLAT CAT 5E RJ45 to RJ45 PATCH CORD	10
US-5055-X	FLAT CAT 5E RJ45 to RJ45 PATCH CORD	15

X Color = 7 (Pink)



CAT5E RJ45 to RJ45 Patch Cord, LSZH



Shielded CAT5E RJ45 to RJ45 Patch Cord,LSZH



FLAT CAT5E RJ45 to RJ45 Patch Cord