

G4 Series

Multi-Biometric Attendance & Access Control Terminal with Enhanced Visible Light Facial Recognition



G4 is a multi-biometric identification terminal which features ZKTeco's innovative Enhanced Visible Light Facial Recognition and Z-ID fingerprint sensor technology. The device with latest technologies can perform recognition in a distance from 0.5m to 3m and will function automatically when face are detected so as to deliver higher recognition quality in terms of speed and accuracy than the previous near IR facial recognition. With the applied Deep Learning algorithm, pose angle tolerance and anti-spoof function have been greatly enhanced against dynamic environment and various spoofing attacks. Also with the world's cutting-edge 3D Neuron Fingerprint Algorithm, it precisely authenticates dry, wet, or rough fingerprints efficiently and accurately.

Features



Revolutionary Z-ID FingerPrint Sensor



Proactive Facial Recognition



Wide Pose Angle Acceptance



Enhanced Visible Light Facial Recognition



New Height of Anti-Spoofing



Touchless for Better Hygiene



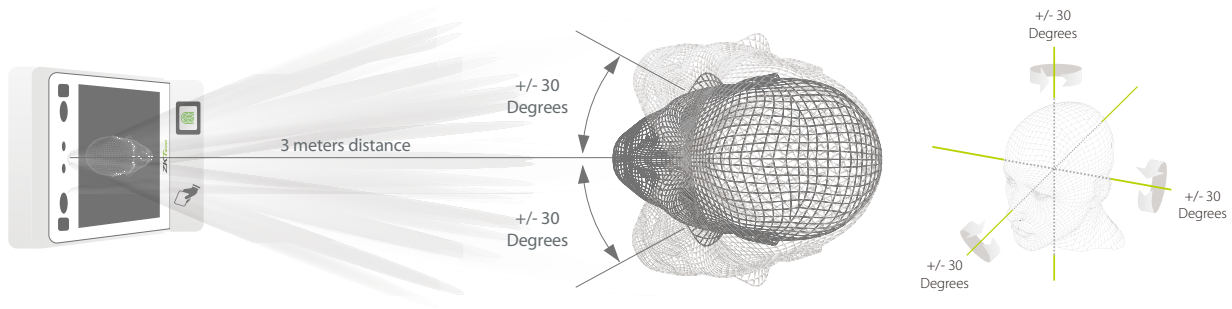
Multiple Verifications: Face/FingerPrint/Card/Password



Speedy Recognition

Recognition distance up to 3m long and extra wide angle recognition

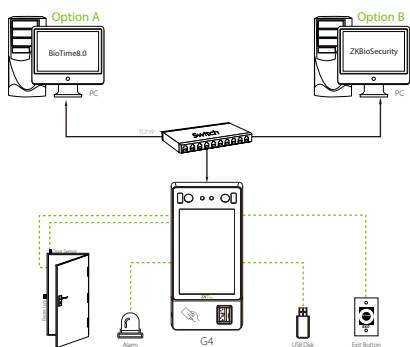
The recognition distance has been greatly extended up to 3 meters long, which significantly improves maximum traffic rate. While most of algorithms only support 15-degree angle facial recognition, ZKBioFace supports 30-degree angle facial recognition.



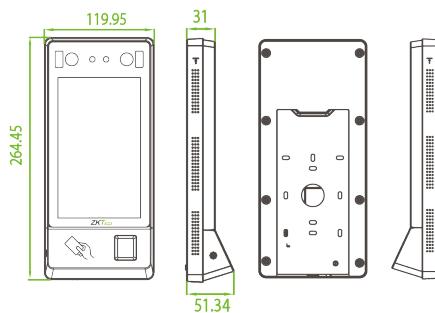
Specifications Ⓞ: GL Premium Feature)

Capacity	Hardware	Compatibility
Users 10,000	High Performance Android Industrial CPU	ZKBio Time
Ⓞ Face Template 10,000	2GB DDR3 RAM	ZKBioSecurity (Time Attendance)
Fingerprints 10,000	16GB ROM	
ID Cards 10,000	Ⓞ Z-ID FingerPrint Sensor	
Transactions 1,000,000	7-inches Touch Screen, 1280*800 Pixel	
	Ⓞ 2NP Binocular Camera	
Communication	Standard Functions	Additional Info
TCP/IP	ID Card / Work Code / ADMS	Algorithms ZKFace V10.0 & ZKFinger V12.0
USB Host	DST / Schedule Bell /	Working Temperature 0°C~+50°C
Wiegand Input	Automatic Status Switch	Working Humidity <90%
Wiegand Output	Record Query / Photo ID	Dimensions 264*120*51mm
	Optional Functions: 13.56MHz IC Card	Facial Recognition Speed ≤1s
		Facial Recognition Distance 0.5m~3m
		Power DC12V 3A
Access Control Interface	Special Functions	
Lock Relay Output	Ⓞ Enhanced Visible Light Facial Recognition	
Exit Button	Ⓞ Liveness Face Detection	
Alarm Output	Multiple Biometric Verification Modes	
Door Sensor		
External Bell		

Configuration



Dimensions (mm)



User Interface

