

# MiniAC Plus

Linux-Based Access control and Time & Attendance Terminal with Visible Light Facial recognition



Proactive Facial Recognition



New Height of Anti-Spoofing



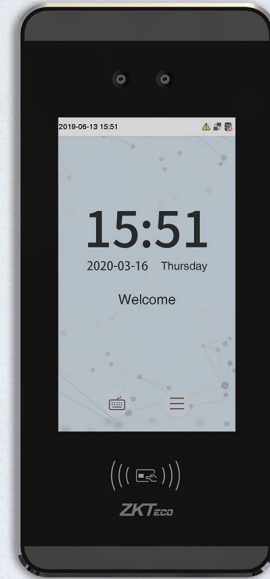
Speedy Recognition



Wide Pose Angle Acceptance



Touchless for Better Hygiene

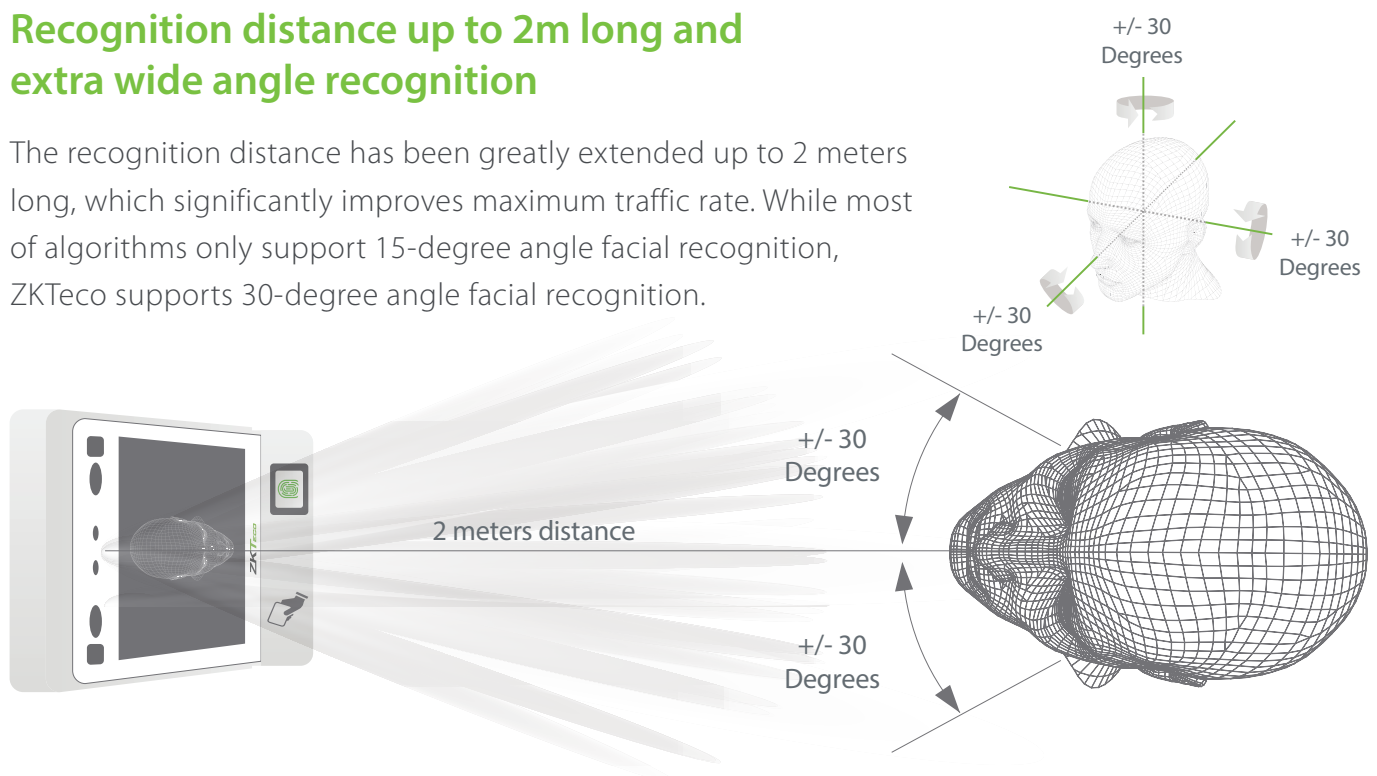


## Features

- Visible Light Facial Recognition
- Anti-spoofing algorithm against print attack(laser, color and B/W photos), videos attack and 3D mask attack
- Multiple Verifications: Face / Card / Password
- Multiple card modules: 125KHz ID card(EM) / 13.56MHz IC card (MF)
- 3,000 face templates capacity

## Recognition distance up to 2m long and extra wide angle recognition

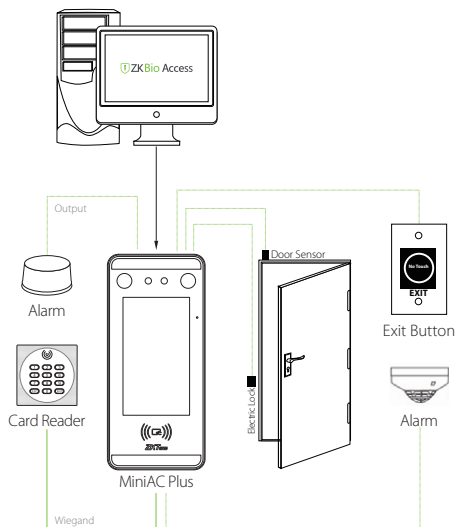
The recognition distance has been greatly extended up to 2 meters long, which significantly improves maximum traffic rate. While most of algorithms only support 15-degree angle facial recognition, ZKTeco supports 30-degree angle facial recognition.



## Specifications:

Display	5-inch Touch Screen
Face Capacity	3,000
Card Capacity	3,000
Transactions	10,000
Operation System	Linux
Standard Functions	ID Card, ADMS, T9 Input, DST, Camera, 9 digit user ID, Access Levels, Groups, Holidays, Anti-passback, Record Query, Tamper Switch Alarm, Multiple Verify Modes
Hardware	900MHZ Dual Core CPU Memory 512MB RAM / 8G ROM 2MP WDR Low Light Camera Adjustable Light Brightness LED
Communication	TCP/IP, WIFI(Optional), Wiegand input/output, RS485
Access Control Interface	3rd Party Electric Lock, Door Sensor, Exit Button, Alarm output, Auxiliary Input
Optional Functions	13.56MHz IC Card / WiFi
Face Recongntion Speed	≤1s
Biometrics Algorithms	ZKFace VX5.8
Power Supply	12V 3A
Working Humidity	10%-90%
Working Temperature	-10 °C- 45 °C
Dimensios (W*H*D)	91.93*202.93*21.5mm
Supported Software	ZKBioAccess

## Configuration:



## Optional Accessories:



## Dimensions(mm)

