

# UT-0215E Series

Enhanced 10/100Base - TX to 100Base - FX Media Converter



## Product Introduction & Benefits



UT-0215ETS

The UT-021XE Media Converter is a cost-effective, feature-packed solution for expanding or extending an existing Ethernet/Fast Ethernet network. The converter boasts enhanced features such as remote loop back testing, auto-negotiation, and link fault signaling for total reliability. It also features seven DIP switches for manual activation of the enhanced features. This gives the UT-021XE the ability to be quickly integrated into a network configuration.

The UT-021XE can support a variety of fiber optic cables and connectors that can extend distances (up to 100km) as well as offering flexibility in the migration to 100Base-FX networks! Several converters can be simultaneously installed by using the UT-3012 12-slot 19" rack-mount chassis converter chassis.



## Ordering Information :

**UT-0215ETS-20 (km) :** Enhanced 10/100Base-TX to 100Base-FX Single Mode, Single Fiber, WDM Media Converter, Transmitter TX1310nm/RX1550nm, (SC Simplex, 20km)

**UT-0215ERS-20 (km) :** Enhanced 10/100Base-TX to 100Base-FX Single Mode, Single Fiber, WDM Media Converter, Receiver TX1550nm/RX1310nm, (SC Simplex, 20km)

**UT-0215ETS-40 (km) :** Enhanced 10/100Base-TX to 100Base-FX Single Mode, Single Fiber, WDM Media Converter, Transmitter TX1310nm/RX1550nm, (SC Simplex, 40km)

**UT-0215ERS-40 (km) :** Enhanced 10/100Base-TX to 100Base-FX Single Mode, Single Fiber, WDM Media Converter, Receiver TX1550nm/RX1310nm, (SC Simplex, 40km)

\* WDM Single Fiber Converters must be installed with Transmitter and Receiver in pairs

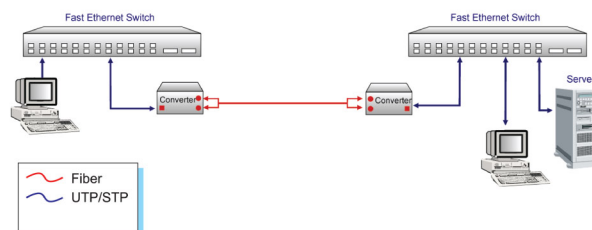
## Main Features :

- Device DIP switches allow multiple configuration options
- Automatic MDI/MDI-X selection on RJ-45 port
- Auto-negotiation, NWay support on RJ-45
- Link Fault Signaling (LFS) Suitable for redundant link
- Remote loop back test
- LEDs for at-a-glance device status
- Extends distances ranging from 2km (multi-mode fiber) to 100km (single mode fiber)
- Store-and-forward at full wire speed
- External power supply
- FCC Class A & CE approved.
- RoHS Compliant
- Included AC power adapter 220 VAC / 12 VDC, 1A



● <b>Standard :</b>	IEEE 802.3 (10BASE-T Ethernet); IEEE 802.3u (100BASE-TX/FX Fast Ethernet)
● <b>Port :</b>	UTP Connector : 1x RJ-45 type Fiber Optic Connector : 1x SC or ST types (Only SC type for Single Mode)
● <b>Max Distance :</b>	UTP : 100 meters (Category 5/5E or better) Fiber Optic : 20 - 40km (Singlemode, Single Fiber, WDM)
● <b>Emissions :</b>	FCC Part 15 of Class A & CE approved
● <b>Weight :</b>	160 g
● <b>Dimensions :</b>	109.2 x 73.8 x 23.4 mm (D x W x H)
● <b>Power Supply :</b>	AC 100 ~ 240V 47/63Hz Input, DC 12V 1A Output
● <b>Power Consumption :</b>	2.8W
● <b>Temperature :</b>	Operating : 0° C to 50° C Storage : -25° C to 70° C
● <b>Humidity :</b>	Operating : 10% to 80% RH Storage : 5% to 90% RH
● <b>Unit LED :</b>	100 : Green - Illuminated when data packets are being transmitted at 100Mbps LFS : Red - Illuminated when a break or disruption exists in copper or fiber links LNK/ACT : Green - Illuminated indicates receiving link pulses from compliant device - Flashing to indicate data packets being sent / received FDX/COL : Amber - Flashing to indicate unit is in full-duplex mode - Flashing to indicate collision PWR : Green - Illuminated to indicate unit is operating under normal power
● <b>Switches :</b>	DIP 1 - Enables / disables auto-negotiation DIP 2 - Copper port (RJ45) duplex mode; full-duplex or half-duplex DIP 3 - Copper port (RJ45) data bit rate; 10Mbps or 100Mbps DIP 4 - Fiber port duplex mode; full-duplex or half-duplex DIP 5 - Enables / disables link fault signaling (LFS) DIP 6 - Enables / disables local loop back (LLBK) DIP 7 - Enables / disables remote loop back (RLBK)

## Applications :



The following illustrates typical applications for the UT-0215E series. The actual distances will depend on several factors including the quality of cables used and the terminal equipment employed.